

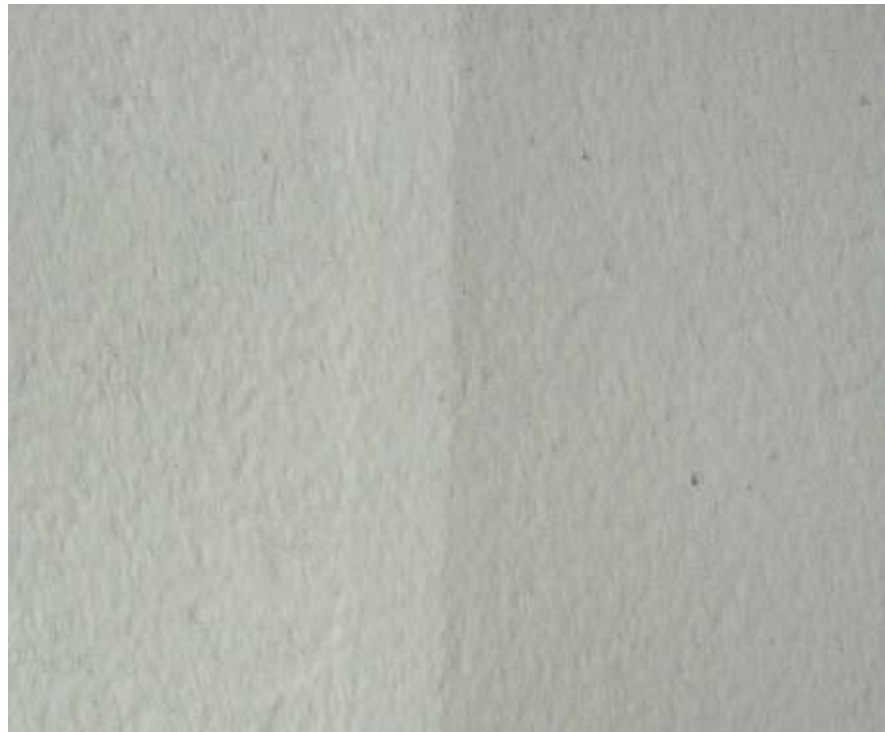
Epoxy Safety Sealer



*Manufacturers of High
Performance Floor
Coatings and
Re-Surfacing Screeds*

SAFETY

- ▲ Outstanding Slip Resistance
- ▲ Internal Use
- ▲ Fast Setting—Early Return to Use
- ▲ Simple to Apply



EPOXY PRODUCTS SAFETY SEALER is a two-pack, solvent free, flexibilised, epoxy resin clear sealer designed to provide a safe, slip resistant, tough, long lasting floor surface.

EPOXY PRODUCTS SAFETY SEALER is suitable for pedestrian walkways, shop entrances, garage floors and other smooth or floor tile areas that require additional slip resistance

EPOXY PRODUCTS SAFETY SEALER has been designed and developed to provide a clear hardwearing flooring sealer that provides excellent traction for pedestrian traffic.

Pack Sizes : 2 Litre and 4.5 Litre packs

Epoxy Products Limited
Unit 7 Haviland Road
Ferndown Ind. Estate
Wimborne
Dorset
BH21 7RZ

Phone: 01202 891899
Fax: 01202 896983

Email: sales@epoxyproducts.co.uk
Web: www.epoxyproducts.co.uk

Epoxy Safety Sealer



Manufacturers of High
Performance Floor
Coatings and
Re-Surfacing Screeds

SAFETY

Epoxy Products Limited
Unit 7 Haviland Road
Femdown Ind. Estate
Wimborne
Dorset
BH21 7RZ

Phone: 01202 891899
Fax: 01202 896983

Email: sales@epoxyproducts.co.uk
Web: www.epoxyproducts.co.uk

DESCRIPTION

EPOXY PRODUCTS SAFETY SEALER is a two-part epoxy resin clear sealer designed to provide a tough, long lasting and slip resistant surface for concrete, timber, tiled and resin floor surfaces

USES:

Ideally suitable for pedestrian walkways, shop entrances, tiled floors, tiled steps and tiled ramps, wheelchair access ramps, toilet and shower rooms and all other internal areas that demand high levels of slip resistance.

PREPARATION:

Surfaces must be clean, dry, sound and free from grease, oil and other forms of contamination. Concrete laitance on new concrete or power floated concrete should be removed by using CONCRETE ETCH and rinsed thoroughly with cold water and allowed to thoroughly dry. This sealer may also be applied onto previously painted floors providing the existing floor paint is perfectly sound and well abraded. Secure paper masking tape to designate walkways, gangways and areas to be treated. Applying between the taped lines. For extremely porous surfaces apply one coat of EPOXY SEALER as a primer 24 hours before applying the SAFETY SEALER.

MIXING:

Empty the entire contents of Pack B (Hardener) into Pack A (Resin) and stir using an electric drill and paddle attachment. Ensure you reach the sides and bottom of the container during the mixing process. Having mixed thoroughly the entire contents must be used all within 30 minutes.

APPLICATION: Apply the sealer immediately after mixing by brush or roller. Remove all masking tape while the sealer is still wet. Allow to harden, normally overnight.

HEALTH AND SAFETY: Read the Health and Safety Data Sheet prior to handling this product.

PRODUCT DATA

COVERAGE

A 2 litre pack will cover approximately 20 square metres.

APPEARANCE

Clear resin with clear grit. In most situations very little change in substrate colour is noticeable.

POT LIFE

When fully mixed, approximately 15 minutes. Extended pot life at lower temperatures, reduced at high temperatures.

CURING /HARDENING TIME

Tack free in 2 hours @ 20°C.

Walk on after 4 hours.@ 20°C

Full cure/ hardening after 7 days.

CHEMICAL RESISTANCE

Resistant to spillages of most chemicals commonly met within industry. Seek Technical advice from EPOXY PRODUCTS TECHNICAL DEPARTMENT.

LIMITATIONS

Do not use at temperatures below 4⁰ C. Excessive impact will damage the surface. Ensure thorough cleaning has been carried out prior to application. Surfaces being treated must have a waterproof membrane to prevent rising moisture.

PACK

Comprising of two components. Resin and Hardener .